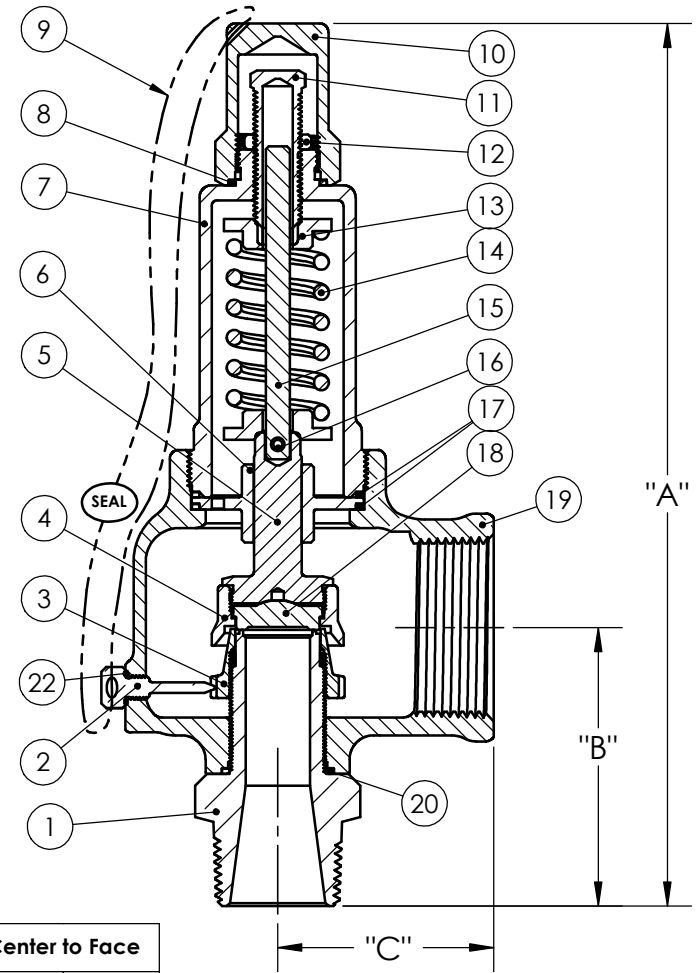
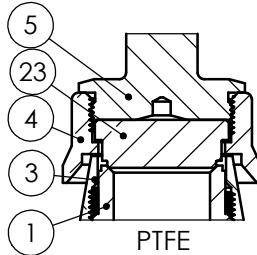
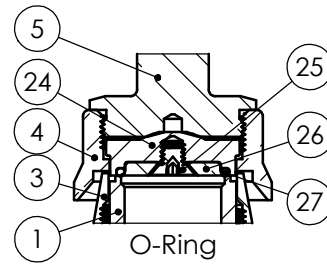


Item	Description	Material
1	Nozzle	SA479-316 SS
2	Ring Lock Screw	B16 Brass
3	Lower Ring	SA351-CF8M SS
4	Disc Holder	B16 Brass
5	Disc Holder Shaft	B16 Brass
6	Disc Guide	B16 Brass
7	Bonnet	B16 Brass
8	Hood Seal	PTFE
9	Seal Wire	Steel / Lead
10	Hood	B16 Brass
11	Pressure Screw	B16 Brass
12	Lock Nut	B16 Brass
13	Spring Plate	B16 Brass
14	Spring	302/17-7 SS
15	Spring Post	B16 Brass
16	Spring Pin	18-8 SS
17	Disc Guide Seals (2)	PTFE
18	Disc	SA479-316 SS
19	Body	B584 C84400
20	Nozzle Seal	PTFE
21	Nameplate	Stainless
22	Lock Screw Seal	PTFE

Series 741 Seating Options

ITEM	Description	Material
23	Disk	PTFE
24	O-Ring Disk	SA479-316 SS
25	Screw	18-8 SS
26	Disk Insert	SA479-316 SS
27	O-Ring	Various



1 1/2" E Orifice is ASME/CE Air/Gas and Steam Only

Orifice	Max Set Pressure	Connections		Closed Cap	Lift Lever	Center to Face		Orifice	Max Set Pressure	Connections		Closed Cap	Lift Lever	Center to Face	
		MNPT	FNPT			"A"	"B"			"C"	MNPT			FNPT	"A"
D	1500	1/2"	3/4"	7-3/8"	8-1/8"	2-3/8"	1-5/8"	F	750	1-1/4"	1-1/2"	9-1/4"	9-5/8"	2-7/8"	2-1/4"
D	1500	1/2"	1"	7-3/8"	8-1/8"	2-3/8"	1-5/8"	F	750	1-1/2"	1-1/2"	9-1/4"	9-5/8"	2-7/8"	2-1/4"
D	1500	3/4"	3/4"	7-3/8"	8-1/8"	2-3/8"	1-5/8"	G	700	1-1/4"	2"	10-1/4"	10-5/8"	3-3/8"	2-5/8"
D	1500	3/4"	1"	7-3/8"	8-1/8"	2-3/8"	1-5/8"	G	700	1-1/2"	2"	10-1/4"	10-5/8"	3-3/8"	2-5/8"
D	1500	1"	1"	7-3/8"	8-1/8"	2-3/8"	1-5/8"	G	700	2"	2"	10-1/4"	10-5/8"	3-3/8"	2-5/8"
E ¹	1500	1/2"	3/4"	8-1/8"	9"	2-5/8"	2"	H	600	1-1/2"	2"	11-3/4"	12-1/8"	3-1/2"	2-7/8"
E ¹	1500	1/2"	1"	8-1/8"	9"	2-5/8"	2"	H	600	2"	2"	11-3/4"	12-1/8"	3-1/2"	2-7/8"
E	1500	3/4"	1"	8-1/8"	9"	2-5/8"	2"	H	600	1-1/2"	2-1/2"	11-3/4"	12-1/8"	3-1/2"	2-7/8"
E	1500	3/4"	1-1/4"	8-1/8"	9"	2-5/8"	2"	H	600	2"	2-1/2"	11-3/4"	12-1/8"	3-1/2"	2-7/8"
E	1500	1"	1"	8-1/8"	9"	2-5/8"	2"	H	600	2-1/2"	2-1/2"	11-3/4"	12-1/8"	3-1/2"	2-7/8"
E	1500	1"	1-1/4"	8-1/8"	9"	2-5/8"	2"	J	600	2"	3"	14-1/4"	14-1/2"	4"	3-1/4"
E	1500	1-1/4"	1-1/4"	8-1/8"	9"	2-5/8"	2"	J	600	2-1/2"	3"	14-1/4"	14-1/2"	4"	3-1/4"
F	750	1"	1-1/2"	9-1/4"	9-5/8"	2-7/8"	2-1/4"	J	600	3"	3"	14-1/4"	14-1/2"	4"	3-1/4"

Inlet Sizes from 1/2" to 3"
 Max Temp : 425°F
 Max Pressure: 1500 P.S.I. (300 P.S.I Steam)
 Back Pressure : 10% of set, max 50 P.S.I.
 (whichever is less)

Aquatroll
VALVE COMPANY, INC. I.C.

PART NAME		Series 741
Date:	7/18/2013	Part Number 741-01-12
Drawn by:		
Approved by:		