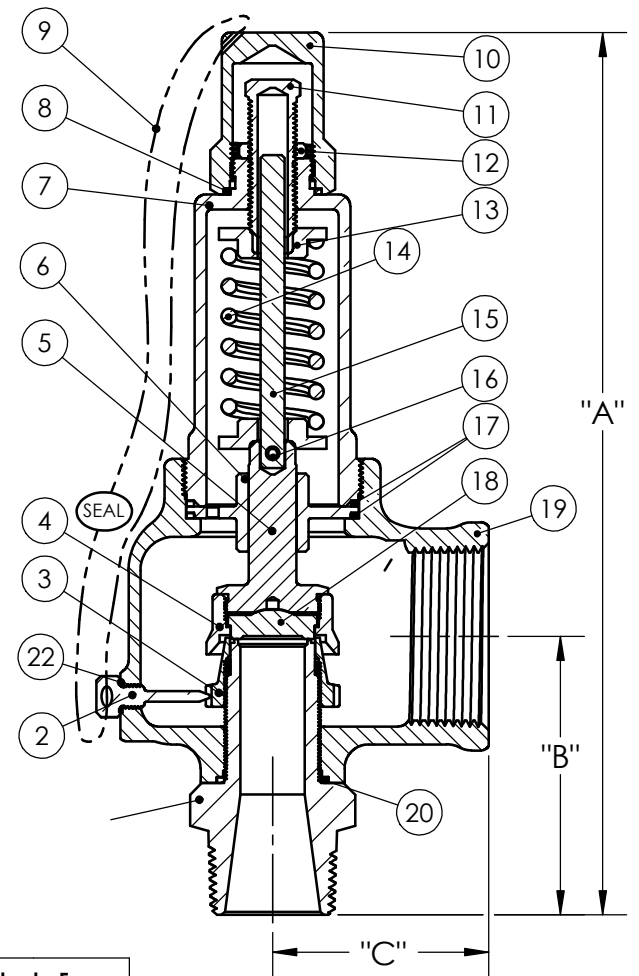
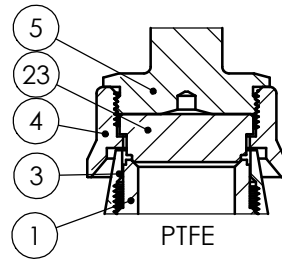
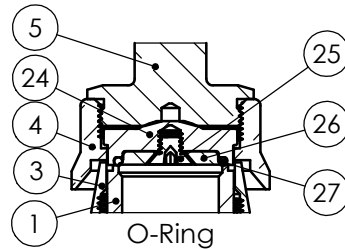


Safety Relief Valve for Air / Gas / Steam / Liquid
 Certifications: ASME - NB Section VIII, PED/CE, CRN

Item	Description	Material
1	Nozzle	B16 Brass
2	Ring Lock Screw	B16 Brass
3	Lower Ring	SA351-CF8M SS
4	Disc Holder	B16 Brass
5	Disc Holder Shaft	B16 Brass
6	Disc Guide	B16 Brass
7	Bonnet	B16 Brass
8	Hood Seal	PTFE
9	Seal Wire	Steel / Lead
10	Hood	B16 Brass
11	Pressure Screw	B16 Brass
12	Lock Nut	B16 Brass
13	Spring Plate	B16 Brass
14	Spring	302/17-7 SS
15	Spring Post	B16 Brass
16	Spring Pin	18-8 SS
17	Disc Guide Seals (2)	PTFE
18	Disc	SA479-316 SS
19	Body	B584 C84400
20	Nozzle Seal	PTFE
21	Nameplate	Stainless
22	Lock Screw Seal	PTFE

Series 740 Seating Options

ITEM	Description	Material
23	Disk	PTFE
24	O-Ring Disk	SA479-316 SS
25	Screw	18-8 SS
26	Disk Insert	SA479-316 SS
27	O-Ring	Various



¹ 1/2" E Orifice is ASME/CE Air/Gas and Steam Only

Orifice	Max Set Pressure	Connections		Closed Cap "A"	Lift Lever "A"	Center to Face "B" "C"		Orifice	Max Set Pressure	Connections		Closed Cap "A"	Lift Lever "A"	Center to Face "B" "C"	
		MNPT	FNPT			MNPT	FNPT			MNPT	FNPT			MNPT	FNPT
D	350	1/2"	3/4"	7-3/8"	8-1/8"	2-3/8"	1-5/8"	F	350	1-1/4"	1-1/2"	9-1/4"	9-5/8"	2-7/8"	2-1/4"
D	350	1/2"	1"	7-3/8"	8-1/8"	2-3/8"	1-5/8"	F	350	1-1/2"	1-1/2"	9-1/4"	9-5/8"	2-7/8"	2-1/4"
D	350	3/4"	3/4"	7-3/8"	8-1/8"	2-3/8"	1-5/8"	G	350	1-1/4"	2"	10-1/4"	10-5/8"	3-3/8"	2-5/8"
D	350	3/4"	1"	7-3/8"	8-1/8"	2-3/8"	1-5/8"	G	350	1-1/2"	2"	10-1/4"	10-5/8"	3-3/8"	2-5/8"
D	350	1"	1"	7-3/8"	8-1/8"	2-3/8"	1-5/8"	G	350	2"	2"	10-1/4"	10-5/8"	3-3/8"	2-5/8"
E ¹	350	1/2"	3/4"	8-1/8"	9"	2-5/8"	2"	H	350	1-1/2"	2"	11-3/4"	12-1/8"	3-1/2"	2-7/8"
E ¹	350	1/2"	1"	8-1/8"	9"	2-5/8"	2"	H	350	2"	2"	11-3/4"	12-1/8"	3-1/2"	2-7/8"
E	350	3/4"	1"	8-1/8"	9"	2-5/8"	2"	H	350	1-1/2"	2-1/2"	11-3/4"	12-1/8"	3-1/2"	2-7/8"
E	350	3/4"	1-1/4"	8-1/8"	9"	2-5/8"	2"	H	350	2"	2-1/2"	11-3/4"	12-1/8"	3-1/2"	2-7/8"
E	350	1"	1"	8-1/8"	9"	2-5/8"	2"	H	350	2-1/2"	2-1/2"	11-3/4"	12-1/8"	3-1/2"	2-7/8"
E	350	1"	1-1/4"	8-1/8"	9"	2-5/8"	2"	J	350	2"	3"	14-1/4"	14-1/2"	4"	3-1/4"
E	350	1-1/4"	1-1/4"	8-1/8"	9"	2-5/8"	2"	J	350	2-1/2"	3"	14-1/4"	14-1/2"	4"	3-1/4"
F	350	1"	1-1/2"	9-1/4"	9-5/8"	2-7/8"	2-1/4"	J	350	3"	3"	14-1/4"	14-1/2"	4"	3-1/4"

Inlet Sizes from 1/2" to 3"
 Max Temp : 406°F
 Max Pressure : 350 P.S.I (250 P.S.I. Steam)
 Back Pressure : 10% of set, max 50 P.S.I.
 (whichever is less)

Series 740

PART NAME	Series 740
Date: 7/18/2013	Part Number
Drawn by:	740-01-12
Approved by:	