

# Series 130 Safety Valves

## Series 130 - 135

Our Series 130 air/gas and steam safety valves are designed for safety and pressure relief for light and medium capacity applications; where a smaller sized valve is needed. Many are manufactured to meet specific field and OEM applications. ASME and National Board Certified for Section VIII as well as CRN Certifications.

**Series 130**



**Usages:** Compressors, Receivers, Gas lines, Steam lines, Air and Gas receivers, Piping system/tanks, Steam cleaners, sterilizers, Autoclaves

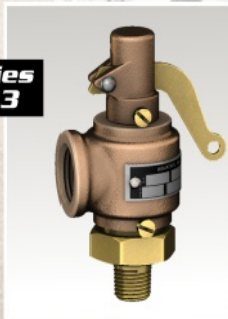
**Series 132**



**Features:**

- Fixed blow-down
- Brass/bronze construction
- Metal-to-metal seating
- Rugged, yet economical
- Stainless steel springs
- Factory set and sealed
- Excellent seat tightness

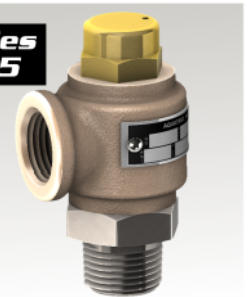
**Series 133**



**Options:**

- Stainless body and disk
- Polishing and chrome plating
- Oxygen cleaning
- Variety of inlets/outlets and lift levers or pull ring
- Oxygen cleaning
- BSPT connections

**Series 135**



**Stainless Steel**

Set pressures below 15 PSI (1.03 Bar) and above 200 PSI (17.2 bar) are NON-Code.

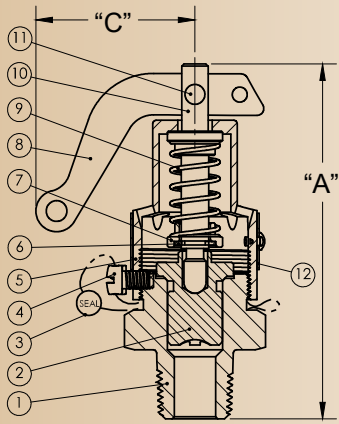
Maximum back-pressure is 10% of set pressure or 50 PSI (3.45 Bar) whichever is less.

Lifting Device as required by the ASME, ASME Section VIII: UG136(3)

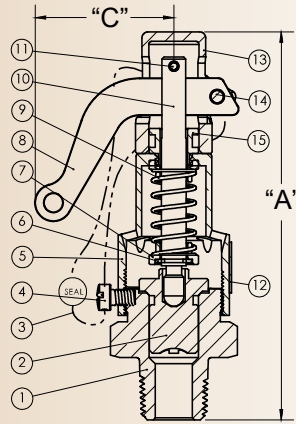
Each pressure relief valve on air, water at the valve inlet that exceeds 140°F (60°C), excluding over-pressure or relief events, or steam service shall have a substantial lifting device which when activated will release the seating force on the disc when the pressure relief valve is subjected to a pressure of at least 75% of the set pressure of the valve.



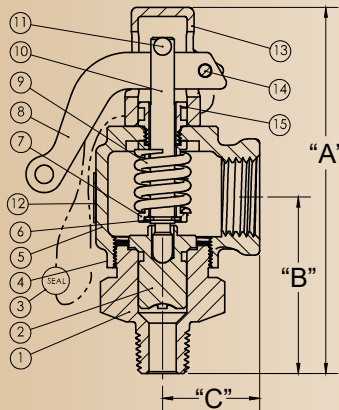
**CRN**



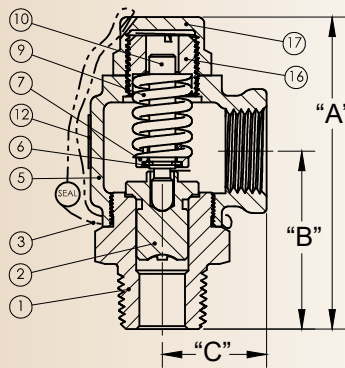
Series 130



Series 132



Series 133



Series 135

<b>Series 130 thru 135</b>			
Item	Description	Brass Option	Stainless Option
1	Body	B16	316 Stainless
2	Disc	Bronze	316 Stainless
3	Seal Wire	Steel/Lead	Steel/Lead
4	Lock Screw	B16	B16
5	Bonnet	Bronze	Bronze
6	Support	Stainless	Stainless
7	Spring Plate	Brass	Brass
8	Lift Lever	Plated Steel	Plated Steel
9	Spring	Stainless	Stainless
10	Spring Post	B16	B16
11	Lift Pin	B16	B16
12	Nameplate	Stainless	Stainless
13	Hood	Bronze	Bronze
14	Lever Pin	B16	B16
15	Hood Mount	B16	B16



<b>Series 130, 132, 133, 135</b>									
Series	Inlet	Outlet	Seat	Dimensions Inches - (mm)			Max. Set PSI - (Barg)	Weight Lbs - (Kg)	
				A	B	C			
130	1/4"	Top	1/2"	3-1/4" (83)	-	1-1/2" (38)	200 (13.8)	1/2	(.2)
130	3/8"	Top	1/2"	3-1/4" (83)	-	1-1/2" (38)	200 (13.8)	5/8	(.3)
130	1/2"	Top	1/2"	3-1/4" (83)	-	1-1/2" (38)	200 (13.8)	5/8	(.3)
132	1/4"	Top	1/2"	3-7/8" (98)	-	1-3/8" (35)	200 (13.8)	3/4	(.3)
132	3/8"	Top	1/2"	3-7/8" (98)	-	1-3/8" (35)	200 (13.8)	7/8	(.4)
132	1/2"	Top	1/2"	3-7/8" (98)	-	1-3/8" (35)	200 (13.8)	7/8	(.4)
133	1/4"	1/2"	1/2"	3-3/4" (95)	1-7/8" (48)	1-3/8" (35)	200 (13.8)	1/2	(.2)
133	3/8"	1/2"	1/2"	3-3/4" (95)	1-7/8" (48)	1-3/8" (35)	200 (13.8)	5/8	(.3)
133	1/2"	1/2"	1/2"	3-3/4" (95)	1-7/8" (48)	1-3/8" (35)	200 (13.8)	5/8	(.3)
135	1/4"	1/2"	1/2"	3" (76)	1-3/4" (44)	1-1/8" (29)	200 (13.8)	1/2	(.2)
135	3/8"	1/2"	1/2"	3" (76)	1-3/4" (44)	1-1/8" (29)	200 (13.8)	5/8	(.3)
135	1/2"	1/2"	1/2"	3" (76)	1-3/4" (44)	1-1/8" (29)	200 (13.8)	5/8	(.3)

## Series 130 thru 135 Part Numbers

130	B	A	1	M	1	K	1	125
Series/Description	Inlet/Outlet	Metals	Connection	Seating	Cap	Service	Options	Set
130 Top Outlet w/Lift Lever	A- 1/4" B- 3/8"	A- Brass Bronze	1- NPT MxF 2- NPT FxF	M- Metal	1- Lift lever	K- ASME VIII Air/gas	1- None	Ex.125
132 Top Outlet Hood And Lift Lever	C- 1/2"	B- 316 SS Bronze	3- BSPT MxF 4- BSPT FxF		2- Closed Cap	L- ASME VIII Steam	2- Chrome Plating	
133 Side Outlet Hood And Lift Lever	A- 1/4" x 1/2" B- 3/8" x 1/2"	L- No Lead Bronze	8- BSPP MxF 9- BSPP FxF		H- Hood and Lift Lever	N- Non-code Air/gas	3- O2 Cleaned	
135 Side Outlet Closed Cap	C- 1/2" x 1/2"	M- 316 SS No Lead				T- Non-code Steam		

### Series 130 thru 135 Air Capacity SCFM @ 10% Over Set Pressure

Slope = 0.403	
PSI	All Sizes
5	9
10	11
15	13
20	15
25	17
30	19
40	24
50	28
60	33
75	39
100	50
125	61
150	72
175	84
200	95

### Series 130 thru 135 Air Capacity Nm<sup>3</sup>/hr @ 10% Over Set Pressure

Slope = 0.403	
Bar	All Sizes
0.2	16
0.5	19
1	22
2	26
3	29
4	33
5	40
6	48
7	55
8	67
9	85
10	104
11	123
12	142
13.8	161



### Series 130 thru 135 Steam Capacity #/Hr @ 10% Over Set Pressure

Slope = 1.13	
PSI	All Sizes
5	26
10	31
15	37
20	43
25	48
30	54
40	66
50	79
60	91
75	110
100	141
125	172
150	203
175	234
200	265

### Series 130 thru 135 Steam Capacity kg/hr @ 10% Over Set Pressure

Slope = 1.13	
Bar	All Sizes
0.2	12
0.5	14
1	17
2	19
3	22
4	24
5	30
6	36
7	41
8	50
9	64
10	78
11	92
12	106
13.8	120

