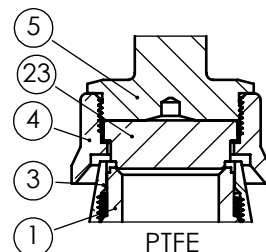
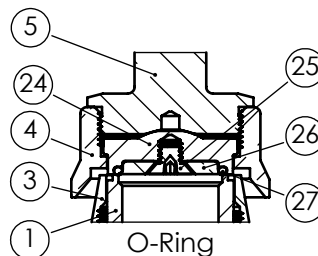
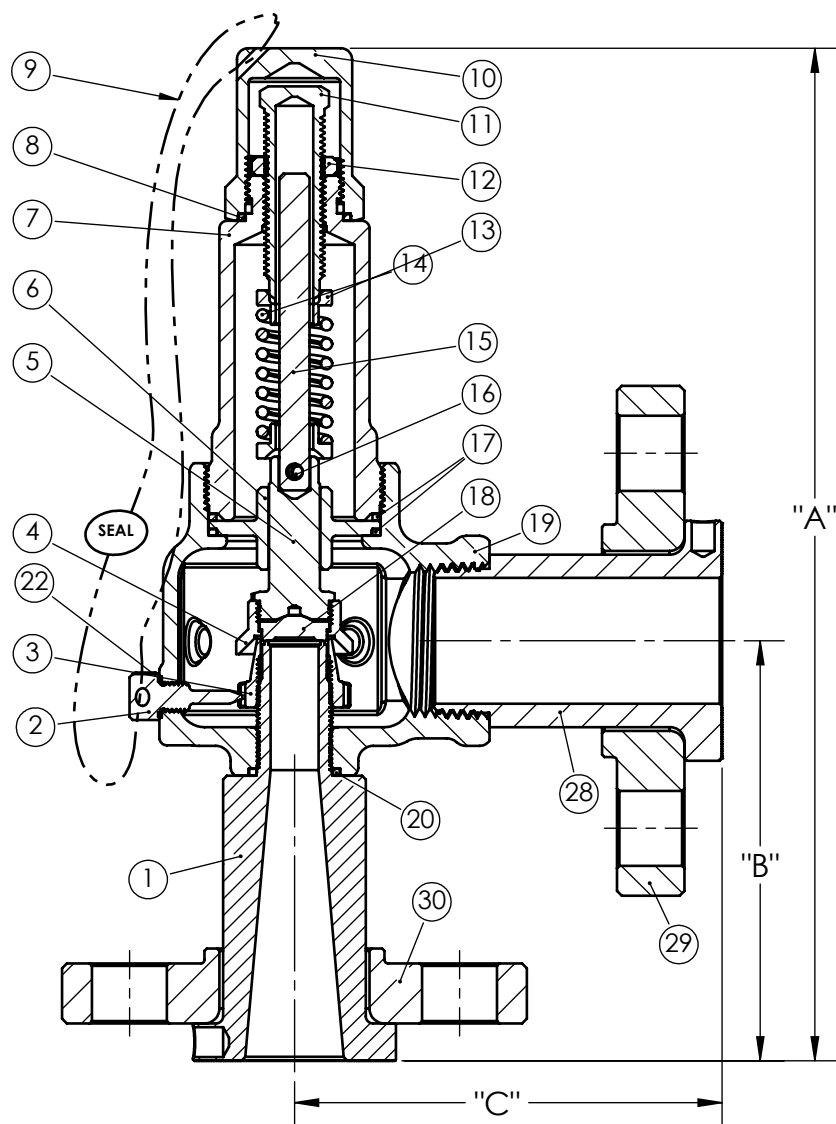


Safety Relief Valve for Air / Gas / Steam / Liquid  
Certifications: ASME - NB Section VIII, PED/CE, CRN



Item	Desc.	Material
1	Lap Joint Nozzle	SA479-316, SS
2	Ring Lock Screw	SA479-316, SS
3	Lower Ring	SA351-CF8M, SS
4	Disc Holder	SA479-316, SS
5	Disc Holder Shaft	SA479-316, SS
6	Disc Guide	SA479-316, SS
7	Bonnet	SA108-1117, SA216-WCB
8	Hood Seal	PTFE
9	Seal Wire	Steel / Lead
10	Hood	SA108-1018
11	Pressure Screw	SA479-316, SS
12	Lock Nut	SA479-316, SS
13	Spring Plate	SA479-316, SS
14	Spring	17-7 SS
15	Spring Post	SA479-316, SS
16	Spring Pin	18-8, SS
17	Disc Guide Seals (2)	PTFE
18	Disc	SA479-316, SS
19	Body	SA216-WCB
20	Nozzle Seal	PTFE
21	Nameplate	Stainless
22	Lock Screw Seal	PTFE
28	Outlet Fitting	SA479-316, SS
29	Lap Joint Flange	CS A-105
30	Lap Joint Flange	CS A-105

Orifice	Connections		Dimensions			
	Inlet 150#	Outlet 150#	Closed Cap "A"	Lift Lever "A"	Center to Face	
					"B" Inlet	"C" Outlet
D	1/2"	1"	9-5/8"	10-1/4"	4-5/8"	4-1/4"
D	3/4"	1"	9-5/8"	10-1/4"	4-5/8"	4-1/4"
D	1"	1"	11-1/2"	12-1/8"	6-1/2"	4-1/4"
E	3/4"	1"	10-3/16"	10-7/8"	4-5/8"	4-1/4"
E	3/4"	1-1/4"	10-3/16"	10-7/8"	4-5/8"	4-1/4"
E	1"	1-1/4"	10-3/16"	10-7/8"	4-5/8"	4-1/4"
F	1"	1-1/2"	11"	11-5/8"	4-5/8"	4-5/8"
F	1-1/2"	1-1/2"	12-7/8"	13-1/2"	4-5/8"	4-5/8"
G	1-1/4"	2"	12-3/8"	13"	5-5/8"	4-3/4"
G	2"	2"	14"	14-1/2"	7-1/8"	6-1/2"
H	1-1/2"	2-1/2"	14"	14-5/8"	5-7/8"	5-3/8"
J	2"	3"	16-5/8"	17-1/8"	6-1/2"	6"

ASME B16.5 Lap Joint flanges  
All outlet flanges are class 150  
"B" and "C" dimensions can be customized  
Serrated or smooth faces (Customer specified)

Maximum backpressure:  
50 P.S.I. or 10% of set pressure (whichever is less)

Series 742 Seating Options

ITEM	Description	Material
23	Disk	PTFE
24	O-Ring Disk	SA479-316, SS
25	Screw	18-8
26	Disk Insert	SA479-316, SS
27	O-Ring	Various

Revised 3/22/2019

**Aquatrol**  
VALVE COMPANY, INC.

PART NAME	Series 742	
Date:	3/30/2018	Part Number
Drawn by:		742-01-FL
Approved by:		